



# INSTRUCTION MANUAL

## Spray Gun Cleaner



Model: SGC-A

Guangzhou ANONA Co., Ltd  
Guangzhou YOKISTAR Co.,Ltd

Guangzhou ANONA Co., Ltd  
Guangzhou YOKISTAR Co.,Ltd  
Tel: 0086-20-87460378  
Direct Line: 0086-13922179158  
E-mail: anona@anonaauto.com  
Website: www.anonaauto.com  
Address: ROOM 707, NO. 28 JINDA STREET, LIWAN DISTRICT,  
GUANGZHOU, GUANGDONG, CHINA

# CONTENTS

I. Product Features -----	2
II. Technical Data -----	2
III. Working Principle -----	2
IV. Parts Explanation -----	3
V. Assembly Steps -----	4
VI. Safety Attention -----	8
VII. Troubleshooting & Solution -----	8
VIII. Maintenance Tips -----	8

**Before installation and operation, please read this INSTRUCTION MANUAL carefully and ensure all details in this manual are well understood.**

## I. Product Features

- Cleaning free from spray gun disassembly is realized by our Spray Gun Cleaner.
- It cleans spray gun through separating compressed air and solvent under high negative pressure.
- NO PUMP cleaning ensures quick and optimum cleaning finished within 30 seconds.
- Cleaning fluid flow can be adjusted according to requirements.
- It can efficiently use for water-based solvent or oil-based solvent.
- Two containers are equipped to hold clean solvent and recycled solvent separately, saving more solvent.
- Air gun is equipped to dry spray gun after cleaning; air quantity can be adjusted according to requirements.

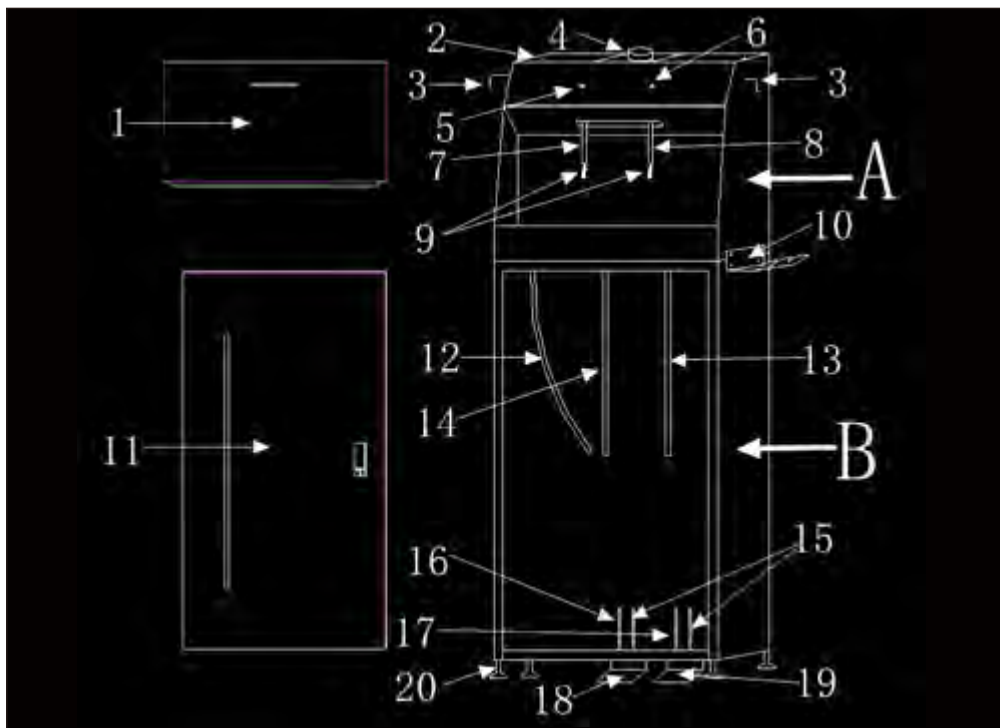
## II. Technical Data

Air Consumption in Max. Pressure	90 L/min
Air Consumption under Constant Solvent	70 L/min
Max. Pressure	8 bar
Solvent Pipe Inner Dia.	8 mm
Compressed Air Pipe Inner Dia.	5 mm
Exhaust Line Dia.	100 mm
Noise	< 80 dB
Dimension	500 x 330 x 1402 mm
Net Weight	30 kg

## III. Working Principle

- ▶ The spray gun cleaner is to flow cleaning fluid by high negative pressure at first, then separate the air and fluid, so as to achieve the function of spray gun cleaning.
- ▶ It is equipped with mass flow air gun for drying the cleaned spray gun.
- ▶ Cleaning and drying one spray gun can be finished within 30 seconds, making sure the spray gun can be used at once after cleaning.

## IV. Parts Explanation



- ◆ The spray gun cleaner consists of two parts,  
 A is "Cleaning Cabinet";                      B is "Storage Cabinet".

### Cleaning Cabinet Explanation

- |                             |                               |
|-----------------------------|-------------------------------|
| 1. Moveable Front Door      | 6. Air Flow Control Valve     |
| 2. Compressed Air Inlet     | 7. Recycling Clean Fluid Pipe |
| 3. Air Pipe Connector       | 8. Fresh Clean Fluid Pipe     |
| 4. Vapor Air Outlet         | 9. Assistant Brush            |
| 5. Fluid Flow Control Valve | 10. Holder                    |

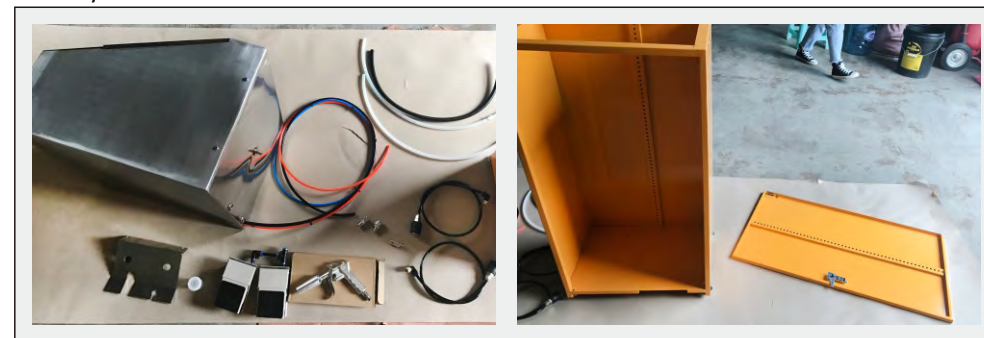
### Storage Cabinet Explanation

- |                                    |  |
|------------------------------------|--|
| 11. Cabinet Door                   | 16. Air Outlet of Foot Pedal for recycling clean fluid |
| 12. Recycling Clean Fluid Pipe     | 17. Air Outlet of Foot Pedal for fresh clean fluid     |
| 13. Fresh Clean Fluid Pipe         | 18. Recycling Clean Fluid Foot Pedal                   |
| 14. Waste Fluid Drainage Pipe      | 19. Fresh Clean Fluid Foot Pedal                       |
| 15. Intake Air Pipe for Foot Pedal | 20. Adjustable Supporting Leg                          |

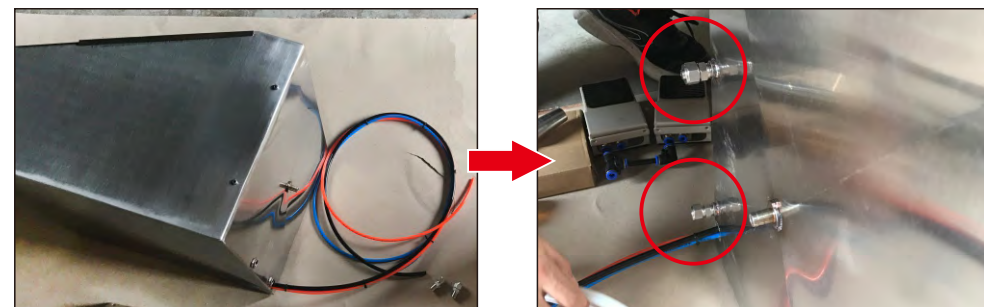
## V. Assembly Steps and Attention

Please finish assembly as below steps; after that, please

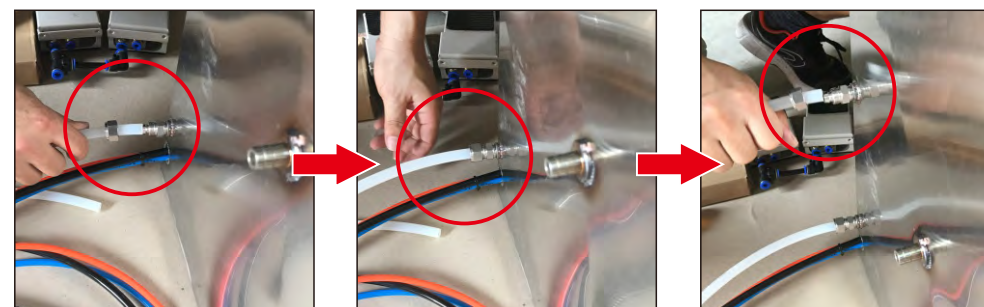
- Connect ducts to "Vapor Air Outlet (Point 4 in Part IV)", ensuring vapor air can go outside of workshop;
- Connect machine with Compressed Air (less than 7 bar), making sure machine is ready for work.



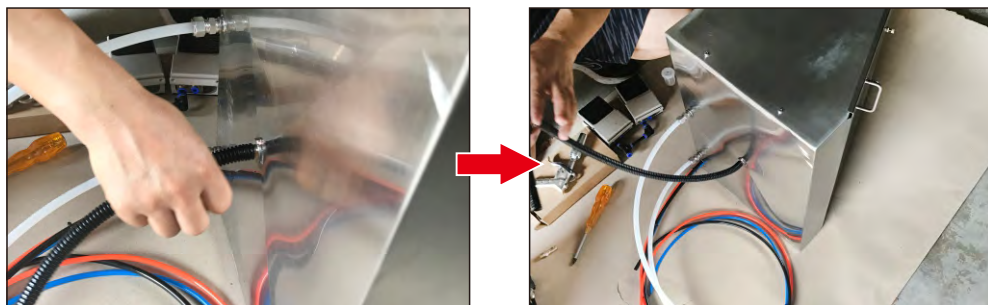
- Assemble "two hose connectors" to "Cleaning Cabinet"



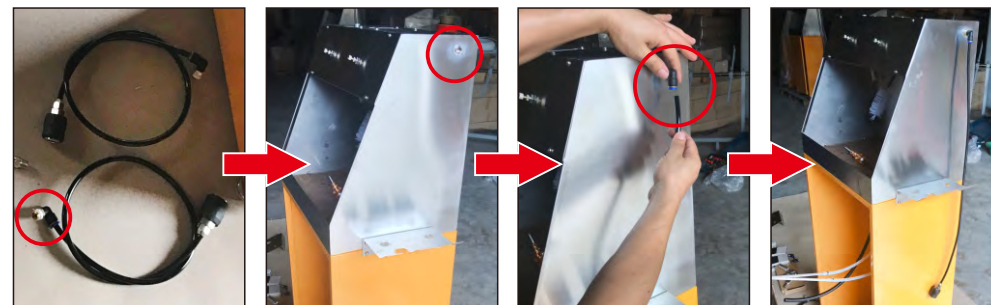
- Unscrew it, and then fix "two fluid pipes" tightly



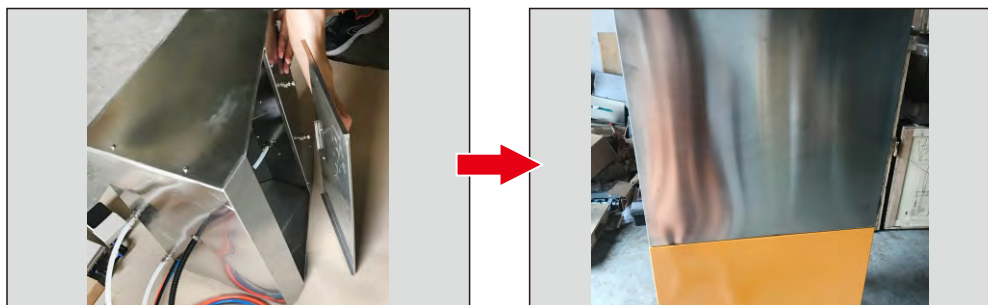
c) Assemble "Waste Fluid Drainage Pipe"



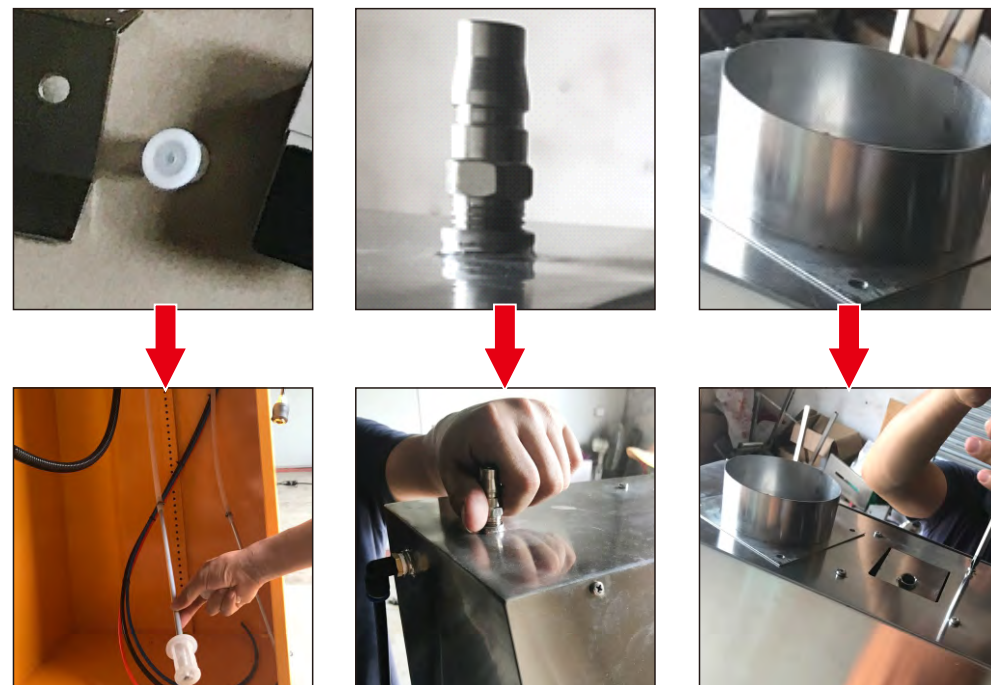
f) Unplug the "Air Pipe Connector", assemble it to cabinet, insert air hose. (the same as the other side)



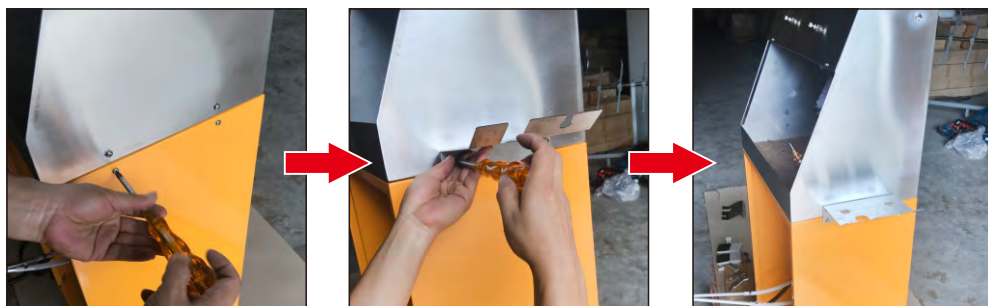
d) Take off "Moveable Door" to prevent dropping off in following steps;  
Assemble "Cleaning Cabinet (without door)" above "Storage Cabinet".



g) Assemble "filter device" to the "left fluid pipe";  
Assemble "compressed air inlet";  
Assemble "Vapor Air Outlet".



e) Unscrew it and assemble "two holders" at two sides.



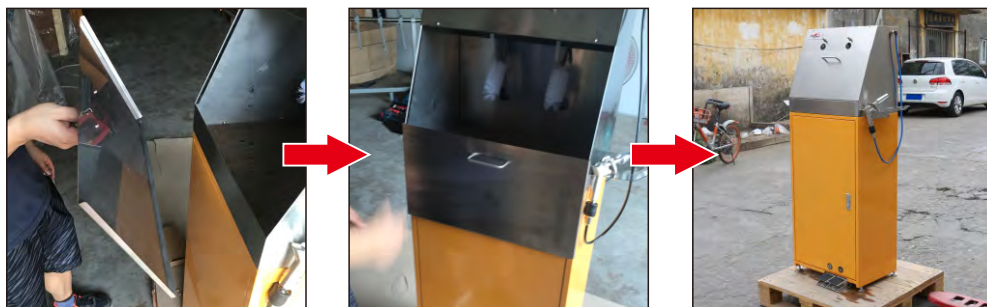
h) Pass through all air hose to bottom; connecting with foot pedal; fix foot pedal to cabinet



i) Fix air hoses on cabinet; Prepare two buckets (provided by end user); one bucket inserted with “left fluid pipe (with filter device)” and “Waste Fluid Drainage Pipe”, the other bucket (contained with clean fluid) inserted with “right fluid pipe”; Assemble air gun; \*The other side (without air gun) is air supply for spray gun when cleaning.



j) Assemble the storage cabinet door & hang up the moveable door.



## VI. Safety Attention

- Wear safety goggles and mask to protect eyes and avoid vapor suction;
- Wear chemical-resistant gloves and clothing to prevent skin-contact;
- If getting and spills or splash of liquid and vapor on skin, please see a doctor in time;
- No poisonous solvent;
- Please make sure cleaning fluid is not harmful to spray gun;
- The machine should stay away from sparkle, kindling and high temperature;
- A fire extinguisher (dry chemical type ABC, dry chemical type BC, foam, carbon dioxide or Halon) must always be kept nearby when working with flammable solvent. Do not use water.
- Do not work while pressure exceeds max. value;
- The vapor air outlet must be connected an exhaust air duct for exhausting the air to outside of workshop.



## VII. Troubleshooting & Solution

Trouble	Possible Reason	Solution
No cleaning fluid flow out	The pipe is blocked.	Dredge the pipe or change a new pipe.
	No compressed air or air pressure is too small.	Check the air source switch or adjust the air source to bigger.
	The cleaning fluid feed inlet or strainer for feed inlet is blocked.	Clean up the feed inlet or change a new strainer.
	The cleaning fluid is used up or lack of cleaning fluid.	Fill up cleaning fluid.
The pressure of cleaning fluid pipe is unstable	The pipe is leakage or loosing.	Fix the pipe or change the pipe.
	The switch is blocked.	Clean up the switch or change the switch.
Air exhaust is weak	The pipe outlet is blocked.	Clean up the pipe outlet
	The pipe is blocked.	Clean up the pipe or change the pipe.

## VIII. Maintenance Tips

- Please keep the cleaning cabinet and pipe outlet are clean.
- The warranty period is 12 months from the date of shipment.
- Disassemble, repair and modify the machine privately, will not have warranty service.